

TOOLS & SW LIST

<ul style="list-style-type: none"> • Computer with Cat 5 cable • 12-24 VDC power supply 	<ul style="list-style-type: none"> • Screwdriver or pin to press hidden reset button
Software for firmware upload	60034-SW-HSM-BOOTLOADER-GS
Firmware file*	60036-fw-hsm-rec-20247g.hex
Webpage file*	60036-www-rev-20247g.bin
Software for log download	60037-sw-hsm-log-rev10000.exe

*last 5 digits and letter denotes revision of FW or webpage and therefore may change.

1. FIRMWARE UPLOAD PROCEDURE

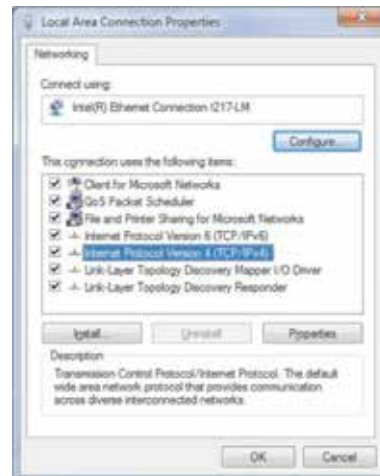
1.1 Setup Computer Network Adaptor

WARNING: Firmware upgrade from revision below 60034.2.00.38 WILL ERASE OLD DATA LOG.

If you need to save the data log file, follow the instructions in section Log File Download to download log file prior to FW upgrade.

Note: that if connecting via Ethernet to a computer directly, the Internet Protocol Version 4 IP address must be set in the network setting on the computer. To do this:

- 1) Open Network and Sharing Center on the computer. Open the Ethernet Connection (or Local Area Connection) labeled "Unidentified network."
- 2) Open properties. From the list, select Internet Protocol Version 4 and then click properties where the IP address can be set.
- 3) Select "Use the following IP address."



The first 3 numbers (separated by periods) of the Internet Protocol Version 4 IP address should match that of the HSM being used, while the last number remains different. For example, if the HSM IP address is the default 192.168.1.50, the Internet Protocol Version 4 IP address can be set to 192.168.1.3.



The wireless network adapter may interfere with HSM firmware upgrade. Turn wireless network adapter off!

1.2 HSM Connection and Firmware Upload

Connect the unit directly to Ethernet port of your computer.

While unit is unpowered hold down the concealed reset button using a small screwdriver (or trimmed fiber end as on the picture) while powering the unit.

Release the reset button within 2s after powering the unit.

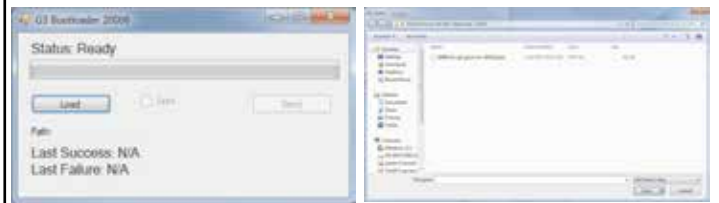


Verify that unit is in bootloader mode:

- SYS LED flashing yellow
- LCD display is blank if present
- 10/100 is Yellow
- Link is Green

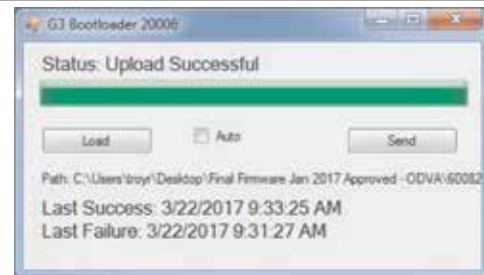


Start the Bootloader SW, press “Load” button to select the .hex file and press “send” to upload the firmware file.



After successful upload verify

Note: “Auto” check box allows for automatic sending of firmware file to unit which is in bootloader mode. This simplifies the firmware upgrade for multiple units

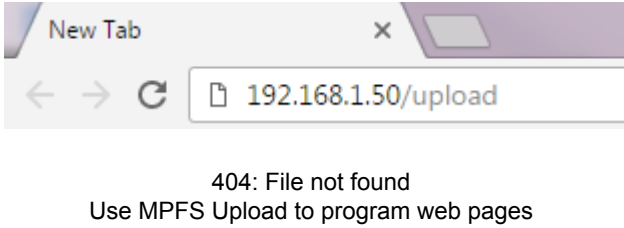
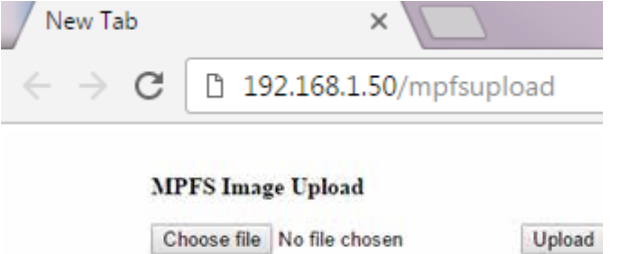
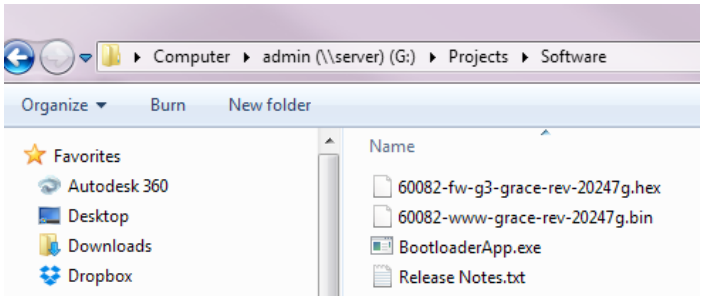


After major firmware update the unit will be blinking SYS red/green. Do not unplug the unit, flash memory is being erased.

The ERASE takes approximately 17 minutes to finish. STAT/SYS will blink green after flash is erased.



After the firmware upgrade web page needs to be uploaded. Follow the instruction in section 1.3 to upload the web page.

1.3 HSM Web Page Upload - After Major Firmware Upgrade

<p>Enter IP address of the unit in to the browser. If web page needs to be uploaded link "MPFS Upload" will appear.</p> <p>Click on the link.</p>	
<p>Page with MPFS upload menu will appear. Click on the button "Chose file" and select the web page file to upload:</p> <p>Authentication is required: User name: admin Password: admin</p>	
<p>Click "upload" and select the file.</p> <p>File extension is *.bin</p>	
<p>After successful upload message will appear</p>	<p style="text-align: center;">MPFS Update Successful</p> <p style="text-align: center;">Site main page</p>

2. LOG FILE DOWNLOAD

This procedure is valid only on old firmware units (FW 60036-2.00.38 and older). Newer firmware allows for file download from webpage interface.

<p>Connect Computer: Connect the laptop to the HSM (either through a router or by setting a static IP and plugging directly into the HSM).</p>	
<p>Start Log Software: Double click on the  60037-sw-g3-log-rev10000.exe (Download the software at www.powellbrite.com)</p>	
<p>Enter IP address: If the HSM IP address is changed from default you will have to enter the new IP in the box.</p>	
<p>Get the log csv: Click get log and save the CSV to a location.</p>	

4. FACTORY RESET

To perform a factory reset:

Insert an object, such as the end of a probe, into the hole, labeled "RST" on the top left corner of the device and depress the concealed button while applying power to the device. Keep the button depressed until both the "SYS" and "COM" LEDs stay green (about 5 seconds).

Release the button and the device will restart with its default values.

I.P.: 192.168.1.50

Username: Admin

Pasword: Admin